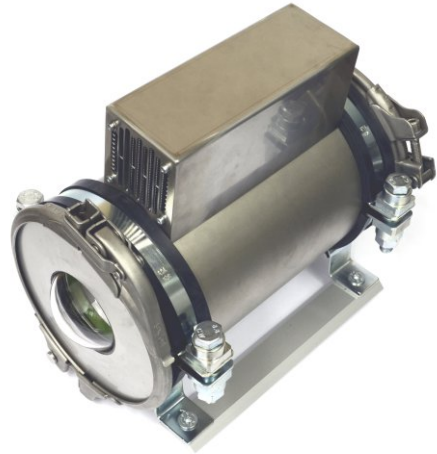




### Benefits:

- Fully automatic operation, heating or cooling
- Only DC voltage required
- For camera operation in up to 50°C ambient temperature with 350W/m<sup>2</sup> sun radiation
- For camera operation in up to 70°C ambient temperature without sun radiation
- Permanent temperature control
- Robust, stainless steel outer enclosure
- Good UV and ageing resistance
- IP67 (inner enclosure)/IP54 (outer enclosure)
- Easy handling
- Proven over years in the Mojave desert



### Technical Details:

<b>Max. Camera Size (w x h)</b>	60 x 60mm
<b>Max. Lens Diameter</b>	85mm 78mm (lid)
<b>Inner Length</b>	277mm (Size M) 335mm (Size L)
<b>Enclosure Dimensions (w x h x l, without cable gland)</b>	215 x 252 x 300 (Size M) 215 x 252 x 500mm (Size L)

<b>Cable Gland Aperture (max. connector size)</b>	26.5mm
<b>Cable Diameter</b>	Self drilling
<b>Cable Gland Seal</b>	TPE

<b>Protection Class</b>	
Outer Enclosure	IP54
Inner Enclosure	IP66/IP67 (Nema 4 and 6)

<b>Weight (incl. camera mount)</b>	Approx. 6.70kg (Size M) Approx. 7.80kg (Size L)
------------------------------------	--

<b>Material</b>	
Outer Enclosure	V2A Stainless Steel
Inner Enclosure	Anodized Aluminum
<b>Enclosure Seals</b>	EPDM

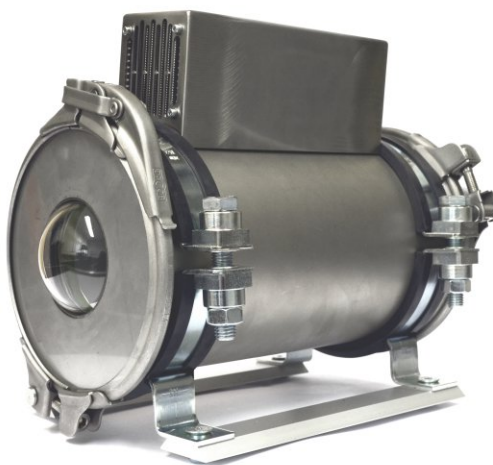
<b>Window Aperture</b>	65mm
------------------------	------

<b>Standard Window</b>	BK7, double sided ARC
<b>3" Germanium</b>	Order Number: 20.000.018
<b>3" Acrylic, double sided AR</b>	Order Number: 20.000.033

<b>Window Seal</b>	EPDM
--------------------	------



The mount guarantees excellent heat dissipation



Product	Order Number
<b>Turtle M</b> Enclosure with up to 70W cooling and 90W heating power, BK7 window with 65mm aperture diameter, outer enclosure stainless steel, wall mounting brackets, 5m thermometer and power supply cable (External Peltier controller and power supply required).	70.300.242
<b>Turtle MD</b> Enclosure with up to 70W cooling and 90W heating power, dome window for fisheye lenses, outer enclosure stainless steel, wall mounting brackets, 5m thermometer and power supply cable (External Peltier controller and power supply required).	70.300.245
<b>Turtle L</b> Enclosure with up to 70W cooling and 90W heating power, BK7 window with 65mm aperture diameter, outer enclosure stainless steel, wall mounting brackets, 5m thermometer and power supply cable (External Peltier controller and power supply required).	70.300.250
<b>Turtle LG</b> Enclosure with up to 70W cooling and 90W heating power, G window with 65mm aperture diameter, outer enclosure stainless steel, wall mounting brackets, 5m thermometer and power supply cable (External Peltier controller and power supply required).	70.300.260
<b>Peltier Controller</b> Din rail mount, 16A max. current, digital display, programmable heating- and cooling levels, temperature control with emergency shut down function, max. ambient temperature, external 24V/DC power supply required.	70.300.270
<b>Power supply for Turtle enclosure</b> 24V/DC, 150W, Din rail mount.	70.200.253