



### Benefits:

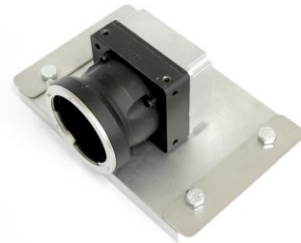
- For cameras up to 90 x 150mm cross section
- Robust construction
- High IP protection class
- Flexible camera positioning
- High chemical resistance
- Vibration-proof mounting
- Camera mount included
- Excellent heat dissipation
- Integration of ring lights possible
- Dome window option



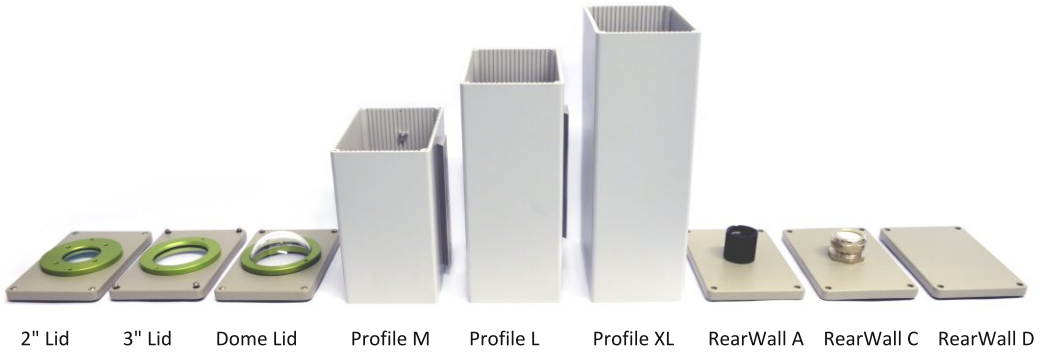
### Technical Details:

<b>Max. Camera Size (w x h)</b>	90 x 150mm
<b>Max. Lens Diameter</b>	90mm (in profile) 78mm (in front lid)
<b>Inner Length</b>	199mm (Size M) 259mm (Size L) 309mm (Size XL)
<b>Enclosure Dimensions (w x h x l, without cable gland)</b>	173 x 113 x 207mm (M) 173 x 113 x 277mm (L) 173 x 113 x 327mm (XL)
<b>Window Aperture</b>	45mm (2" window) 65mm (3" window)
<b>Standard Window</b>	BK7, double sided ARC
<b>2" IR Mirror</b>	Order Number: 20.000.010
<b>2" Sapphire</b>	Order Number: 20.000.016
<b>2" Germanium</b>	Order Number: 20.000.017
<b>3" Germanium</b>	Order Number: 20.000.018
<b>2" Acrylic, uncoated</b>	Order Number: 20.000.027
<b>2" Acrylic, double sided AR</b>	Order Number: 20.000.029
<b>3" Acrylic, double sided AR</b>	Order Number: 20.000.033
<b>Window Seal</b>	EPDM
<b>Protection Class</b>	IP65

<b>Weight (without cable gland)</b>	Approx. 2300g (Size M) Approx. 2650g (Size L) Approx. 2900g (Size XL)
<b>Enclosure Material</b>	Powder Coated Aluminum
<b>Enclosure Seals</b>	NBR
<b>Cable Gland Aperture (max. connector size)</b>	22mm (Rear Wall A) 26.5mm (Rear Wall C)
<b>Cable Diameter</b>	Self drilling (Rear Wall C)
<b>Cable Gland Seal</b>	TPE



The mount provides good heat dissipation



Order Numbers (please specify the camera type for each order!):

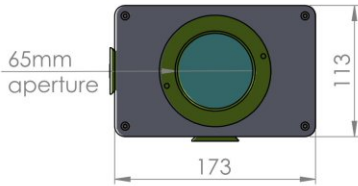
Enclosure Size	Rear Wall	Order Number	Enclosure Size	Rear Wall	Order Number
M, 3" Window	A	2X.X65.180	L, 3" Germanium Window, for e.g. Flir A600	C	2X.X68.250
	C	2X.X66.180			
	D	2X.X67.180			
L, 3" Window	A	2X.X65.250	XL, 3" Window	A	2X.X65.300
	C	2X.X66.250		C	2X.X66.300
	D	2X.X67.250		D	2X.X67.300

### Accessories:

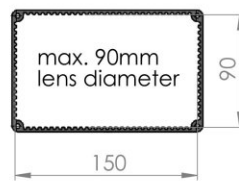
Product	Image	Order No.	Product	Image	Order No.	Product	Image	Order No.
2" Wind Curtain		50.100.010	Cooling Module		60.100.020	Mounting Kit 7		5.070.000
3" Wind Curtain		50.100.021	Corrugated Tube 28mm		20.000.006	Mounting Kit 9		5.090.000
Dome Window		20.040.015	Mounting Kit 1		5.010.000	Mounting Kit 15		5.150.000
30mm Extension		15.030.030	Mounting Kit 2		5.020.000	Mounting Kit 16		5.160.000
60mm Extension		15.030.085	Mounting Kit 6		5.060.000	Mounting Kit 17		5.170.000
M72 Front Lid		20.040.018				Mounting Tool		90.000.004



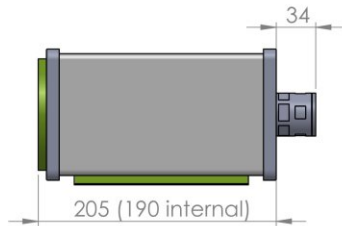
### 3" Front Lid



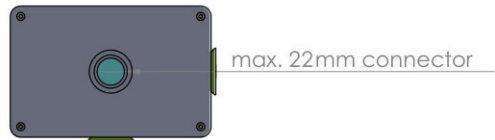
### Profile



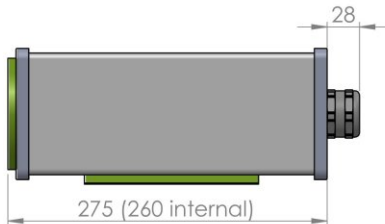
### Size M



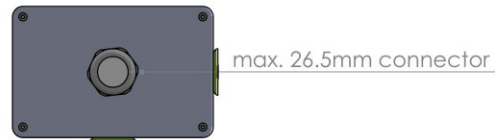
### Rear Wall A



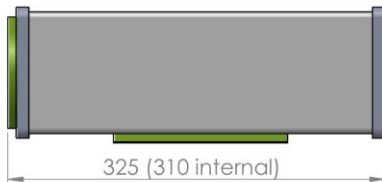
### Size L



### Rear Wall C



### Size XL



### Rear Wall D

